

## BEST PRACTICE, BEST FIT

Are you managing several projects simultaneously? Would you like to build more consistent and efficient processes? Do you need specialist reports and dashboards to suit your diverse organisation and unique requirements?

We are G-Cloud registered and will help pair your organisation with the optimum project management solution accompanied by support, training and consultancy. By implementing a single platform to increase visibility in real-time, and boost productivity and output, all while maintaining a high degree of flexibility, security, and ease of use.

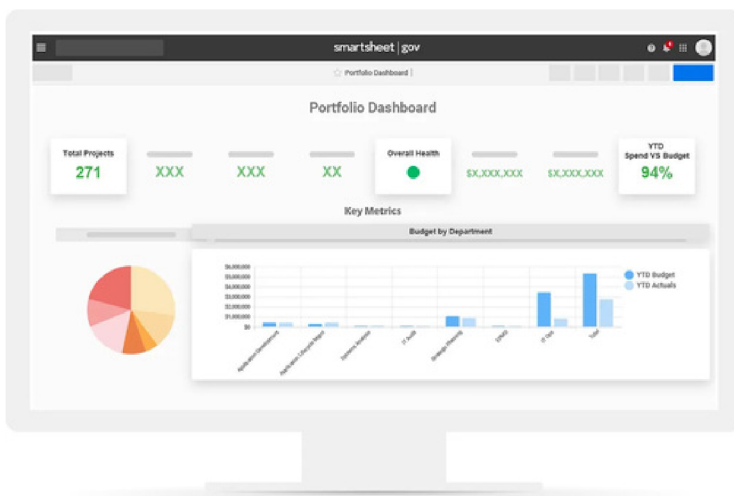
**STREAMLINE OPERATIONS AND  
AUTOMATE WORKFLOWS**

**GAIN VISIBILITY OF ALL WORK AND  
FACILITATE SEAMLESS COLLABORATION**

**BUILD CUSTOM SOLUTIONS ON A  
SINGLE SCALABLE PLATFORM**

**REPORTS AND DASHBOARDS PROVIDE  
REAL-TIME DATA ANYWHERE**

**20% boost in productivity & 40% increase in projects supported**



From managing budgets to mitigating risks, Smartsheet provides your organisation with one centralised platform to standardise procedures and build team cohesion.

Smartsheet comes with ready-to-use templates specifically designed for Government organisations so you can input your data and information to get started straight away.



**BOOK A COMPLIMENTARY CONSULTATION CALL**  
[www.projectplanservices.co.uk/local-government](http://www.projectplanservices.co.uk/local-government)

## ABOUT US

Project Plan Services (PPS) are one of the UK's most dynamic corporate portfolio, programme and project management specialists. Our expertise provides planning solutions that cover a broad spectrum of people, technology and process capabilities.

Our client-focused approach to project delivery is described below and is typically implemented through an Agile fast-track approach to facilitate earlier user acceptance and rapid benefits.



## WORKING WITH ORGANISATIONS LIKE YOURS



## OUR SERVICES



FACE TO FACE  
TRAINING



ONLINE LEARNING



KNOWLEDGE  
ASSESSMENT



PROFESSIONAL  
SERVICES &  
CONSULTANCY



ONGOING &  
SPECIALIST SUPPORT



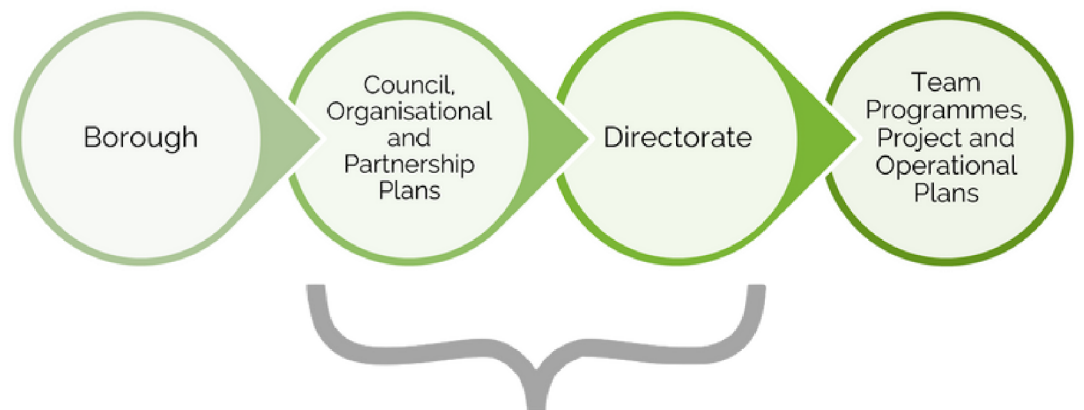
**BOOK A COMPLIMENTARY CONSULTATION CALL**  
[www.projectplanservices.co.uk/local-government](http://www.projectplanservices.co.uk/local-government)

# Stockport Council

WORKING WITH STOCKPORT COUNCIL TO SUPPORT THE LAUNCH OF THEIR NEW 10-YEAR STRATEGIC BOROUGH PLAN.

## Objectives

- Creating consistent project plans for each directorate
- For all project plans to be visible across all functions and stakeholders
- 1 platform and 1 consistent approach
- Use dashboards to present a clear picture of all projects, tasks and status



ONE TRANSFORMATION PROGRAMME CONNECTING ALL 9 SMARTSHEET ITEMS & PRESENTING INTO 1 DASHBOARD

## Project Request Intake Sheet

Request form for project services, resources and funding. The logic within the form helps to determine Complex Projects and Simple Projects, highlighting those that require additional external services or resources. These segmented requests are easily presented to key stakeholders for review and approval. Overall streamlining the approach to creating and executing a project.

**"We wouldn't be where we are now without the support and work from PPS. They provided the expertise that we didn't have before, to get things done quickly."**

- Project Manager, Stockport Council



**STOCKPORT**  
METROPOLITAN BOROUGH COUNCIL

# Armagh City, Banbridge and Craigavon Borough Council

IMPLEMENTING A SOLUTION THAT WOULD ENABLE ASSESSMENT OF THE COUNCIL'S CORPORATE HEALTH AT A GLANCE THROUGH DASHBOARDS AND CHARTS.

## Objectives

- To provide a corporate dashboard displaying a large range of top level departmental KPIs in the form of metrics and charts.
- In early discussions about the dashboard content it became apparent that 2 departments would benefit significantly by having an end-to-end process review, and using Smartsheet to drive substantial efficiency gains. The 2 departments are Corporate Complaints and Information Governance.

## Solution

- An extensive Smartsheet dashboard reporting all relevant management information on a real-time basis across 9 different departments.
- A dashboard that refreshes with current information as soon as the underlying departmental data has been entered.
- Data entered into Smartsheet via an external web form embedded in the Council website, or via an internal departmental form where complaints are received directly by departments.
- All deadlines to be calculated and managed by Smartsheet with automated workflows and reminders at all stages of a complaint.
- Full analysis and reporting of complaints via reports and dashboards, with reporting at directorate and departmental levels.
- Freedom of Information, Subject Access Requests and other information requests are entered directly into Smartsheet
- Workflows are used to calculate statutory response deadlines and to send automated email acknowledgements and responses. These workflows will send internal reminders to ensure requests are responded to in a timely manner.



Armagh City  
Banbridge  
& Craigavon  
Borough Council



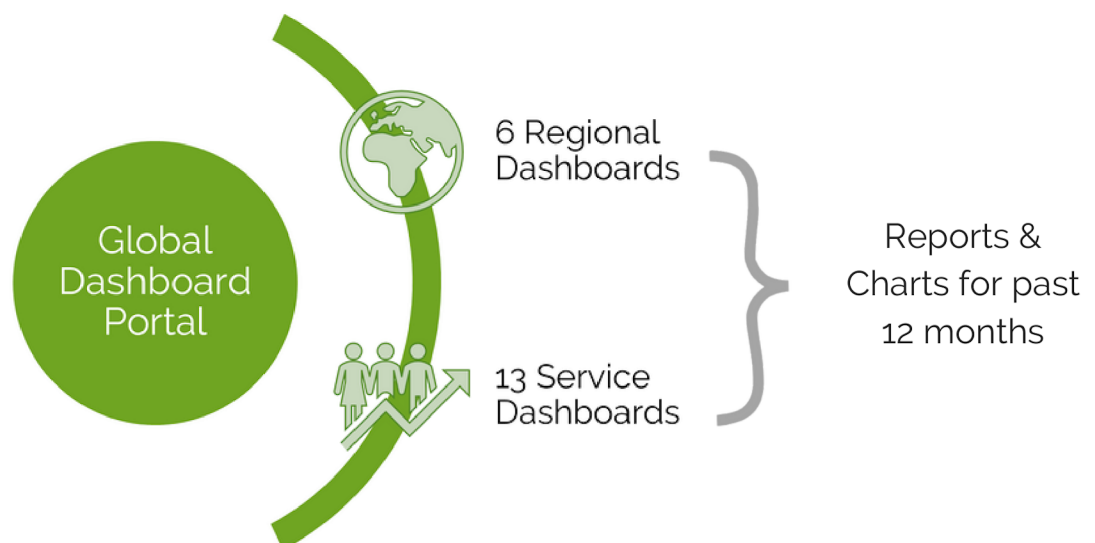
# World Organisation of the Scout Movement (WOSM)

## WORKING WITH WOSM TO CREATE A BESPOKE DASHBOARD REPORTING SYSTEM TO MANAGE GLOBAL VOLUNTEER MENTORING SERVICES

WOSM delivers tailored support and assistance to National Scout Organisations around the world, pairing them with a volunteer consultant who provides guidance and advice for regional projects.

### Objective

- Gain better insight into the global projects running including key analytics
- Learn and understand areas that need improvement and development
- Report on results efficiently to ensure the right services are being offered at the right time



ENABLING TRENDS TO BE RECOGNISED AND APPROPRIATE MANAGEMENT ACTION TO BE TAKEN PROMPTLY, WITHOUT THE PREVIOUS HUGE ADMINISTRATIVE BURDEN.

**“The PPS team was super helpful and kind, working with us on the budget that we had to find a solution and we could not have come up with that solution on our own”**

- Deputy Global Director Organisational Development, WOSM



**SCOUTS**<sup>®</sup>  
Creating a Better World

---

# Testimonials

**We now have a demonstrable suite of reports providing assurance and credibility within the organisation I would highly recommend Project Plan Services compared with other providers as the value earned was greater than that achieved from larger consultancies used historically.**

PIP PEEL / CITB

**"I found the dynamic style of Rob's training really beneficial. We quickly built a rapport and this was extremely helpful working through the training sessions."**

KAREEN MCEVOY / QUEEN MARY'S UNIVERSITY

**"What we have now is a really clear approach that gives every one of our six regions and our global support centre level a really clean way of being able to see information and most importantly, the trends because that's what we were missing before."**

RUTH POTTS / WORLD ORGANISATION OF THE SCOUT MOVEMENT

**"Rob spent time getting to understand our requirements and tailored the training appropriately. More support was given to topics when needed and the training materials were comprehensive."**

JANE GRANT / EPIC